
Creating an Electronic Digital Map of Degraded Agricultural Lands

Adizova Farangiz Nuraliqizi

*Lecturer at the Bukhara Institute of Natural Resources Management, National Research University,
Tashkent Institute of Irrigation and Agricultural Mechanization Engineers*

K. M. Mukhamadov

*Student of the Bukhara Institute of Natural Resources Management of the National Research University
of Tashkent Institute of Irrigation and Agricultural Mechanization Engineers*

A. K. Akhrorov

*Master of the Bukhara Institute of Natural Resources Management of the National Research University
of Tashkent Institute of Irrigation and Agricultural Mechanization Engineers*

Abstract: the main purpose of scientific research is to improve the development of the basis of the remote sensing system in the formation of the agricultural land card in the conditions of the development of the digital economy and deepening of economic reforms, as well as the development of scientifically based proposals and recommendations.

Keywords: Artificial intellect, remote sensing, digital card, degradation, space photos.

In accordance with the strategy of "digital Uzbekistan — 2030", the rapid introduction of artificial intelligence technologies and their wide application in our country, ensuring the possibility of using digital information and their high quality, creating favorable conditions for training qualified personnel in this field is the demand of today. The penetration of digital technologies in the field of Geodesy cartography also leads to an increase in the productivity and accuracy of this direction as well as its peer networks. In the field of Agriculture: the application of artificial intelligence technologies in the process of monitoring the state of soil and agricultural crops on the basis of remote sensing data, as well as agricultural machinery, including the work of combines, has been defined as the main task in the PP-4996 resolution of the president of the Republic of Uzbekistan dated 17 February.

Advantages of remote sensing of the Earth.

- Takes a repeated photo of the same zone (real time);
- Sensors "see" a wider part of the spectrum than the human eye;
- Provides geospatial coordinate and pro geospatial mapping;
- Provides coordinate and projection mapping;
- How many remote sensors(sensors) can work in the whole season, at night and in unfavorable conditions;
- Can be obtained quickly and in different messages.

Remote sensing of the Earth this is an object Object and remote sensing of events as well as

remote sensing of the earth is a process of recording in digital form.

The spatial resolution of the images implies that the smallest object on earth, standing from space, is perceived and written in digital form. Simply put, the spatial resolution is the measurement of the reflection of the area in the 1 pixel space in the photo.

Why lands can be degradation .

The main causes of land degradation This is the conduct of non-agricultural practice in agricultural production excessive use of the springs from the norm, the destruction of forest and other vegetation cover.

In the use of water in non-agricultural irrigation lands more than the norm, when the top layer of the soil meets wind and water erosion, when the top layer of the soil is densified, dressing a special layer, the soil appears in salinity and various soil contamination.

Taking space photos.

For this, the space image is selected massively, from which the space image of the district(massiv)is obtained through the internet or on a compact disk, having made the corresponding payment to the account of the organization.

Sound.In the program PLANET (120808), a space image of google earth is downloaded, the desired zone is selected and the confirmation green icon is pressed using the cursor.Here it is possible to store an additional layer on top of the photo together.

Hybrid Google, Yahoo, Mail.ru. land Cadastral vector cards, etc.During storage, the following works are carried out.

Is there:

- **Zoom 20 -21;**
- **How to contact.map .dat**
- **Kml .tab .whow** to activate an item to create a property
- **Qualityof (jpg vaecwuchun)** In the range of 90-100.

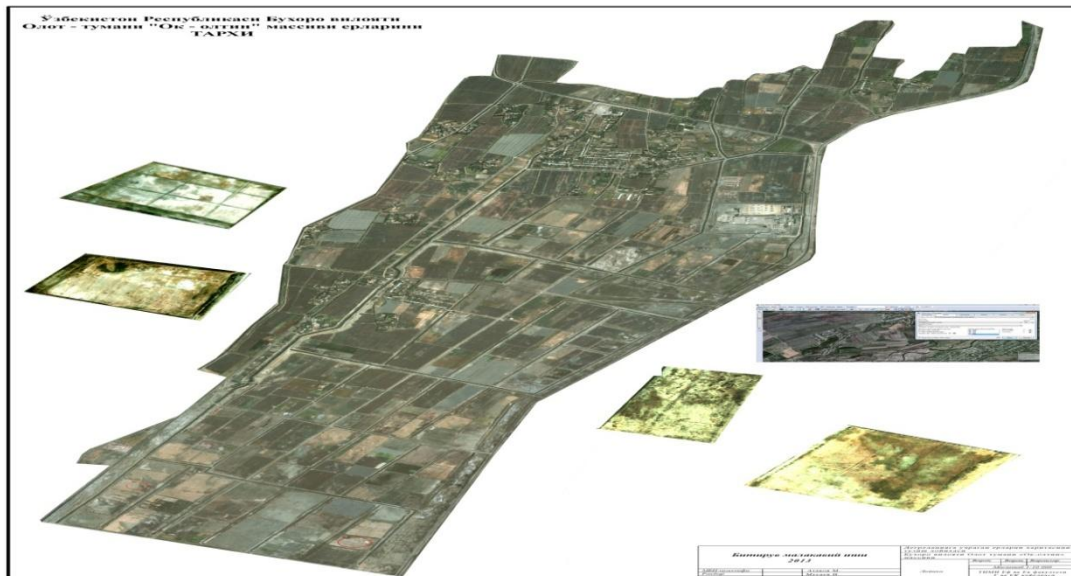
To load **Selection manager – Polygonal .Selection instruments are used and a massive limit is set.**Then, using the Stitch (stitch) command, the photo can be copied in the formats ecw, bmp, jpg, png.

BORDERS OF THE LANDS SUBJECTED TO MASS DEGRADATION.



The Google Earth Pro Program, which is now popular in the monitoring of agricultural lands in the regions of the Republic and the introduction of the latest changes of the massifs to the agricultural maps in places, and the use of space photographs in it, will help in the execution of the monitoring work in high accuracy and short time intervals. Created in the program ArcGIS, an electronic digital card of 1: 10000 scale is obtained, in the case of the day of study, the names of all landowners and land users, including farmer farms, the boundaries of land areas at the crossroads of miningturlar, as well as the topoelements (ditches, roads) that have changed in places, are downloaded to the electronic digital card in.

Google earth space photo downloaded in the program of SAS.PLANET (120808)



If the photo is saved in ECW format, it will be added to the program rastgis as a raster without control buttons but the vector and rastr layers do not overlap with sufficient accuracy if the card coordinate is incorrect. In addition, the Georeferencing command does not activate, in such case it is downloaded in bmp or jpg format. 1:10000 created in the ArcGIS program of the Massiv, an electronic digital card in the Massiv will be obtained, in the case of the day of study, the names of all landowners and land users, including farmer farms, the boundaries of land areas in the section of mining turlar, as well as the topoelements (ditches, roads) that have changed in places will be.



LIST OF REFERENCES:

1. <https://hozir.org/jahon-qishloq-xo`jaligiga-umumiy-tarif>. Html.
2. Асатов С.Р. Сув танқислигида Бухоро воҳаси суғориладиган тупроқларининг мелиоратив-экологик ҳолатини яхшилаш йўллари. Биология фанлари бўйича фалсафа доктори (PhD) диссертацияси автореферати. – Тошкент, 2021. – 45 б.
3. Асатов С.Р. Пути улучшения эколого-мелиоративного состояния орошаемых почв Бухарского оазиса республики Узбекистан при дефиците воды. Ж.: «Актуальные проблемы современной науки». – Москва, 2021. – №4 (121). – С.98-100.
4. Асатов С.Р., Адизов Ш.Б., Нуриддинов О.Х. Бухоро вилоятида тарқалган суғориладиган тупроқларининг мелиоратив ҳолати // Хоразм Маъмур академияси ахборотномаси. – Хива, 2020. – №1. – Б.69–71.
5. Асатов С.Р., Нуриддинов О.Х. Сув танқислиги шароитида Бухоро вилояти шўр тупроқлари мелиорацияси. // «O`zbekiston qishloq va suv xo`jaligi» журнали. – Тошкент, 2019. Махсус сон. – Б. 32–33.
6. Asatov Sayitqul, Axtamov Suxrob, Mahmudov Mironshoh. Removal of chemical weed killers and organics from irrigated land. International Conference on Scientific, Educational & Humanitarian Advancements Hosted online from, Samsun, Turkey, July 15 th , 2021.pp-264-267. www.econferenceglobe.com.
7. Shamshodovich, K. F., Akhtamov, S., Muhammadov, K., & Bobojonov, S. (2021). THE IMPORTANCE OF THE CLUSTER SYSTEM TODAY. *International Engineering Journal For Research & Development*, 6(ISPCIEI), 3-3.

8. Erkin Kodirovich Karimov, Behzod Obidovich Ahmadov, Sallax Atayevich Khamrayev., &Asadbek Oybekovich Khudaynazarov. (2021). MECHANISMS OF RICE GROWING AND RICE DEVELOPMENT IN UZBEKISTAN. " ONLINE - CONFERENCES " PLATFORM, 13–15.
9. SB Adizov, AB Obidovich, MM Maxmudov - Academic Journal of Digital Economics and Stability, 2021 Rights and Responsibilities of the Spouses
10. Sattorov J. Reclamation of land resources, improvement of fertility, their efficient use and protection.//Agro ilm.-Tashkent, 2014-№1 (29). –P.53-54.
11. Gofurov K, Abdullaev S. Characteristics of the soil cover of the irrigated zone of the Bukhara region. Publishing house. "FAN", Tashkent, 1982. - p. 83-125.
12. Komilov O.K. Land reclamation in Uzbekistan. - Tashkent: Publishing House. «FAN»., 1985. - p. 230.